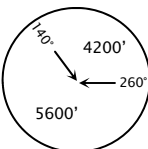
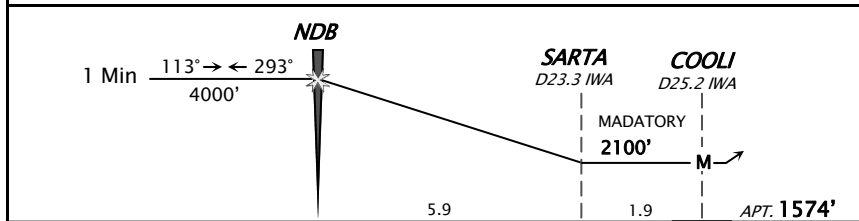
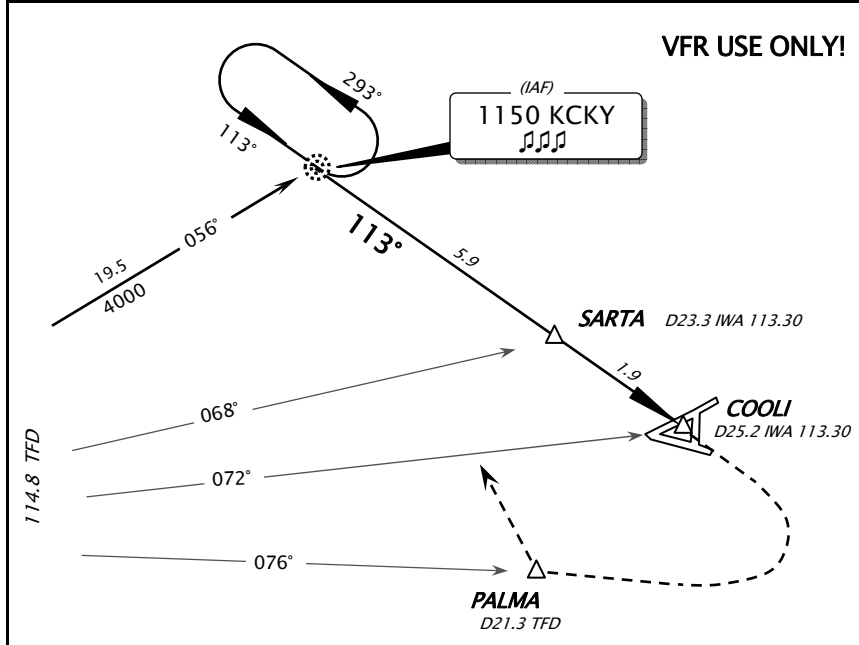


**P08**  
**COOLIDGE MUN**

14 NOV 06  (16-1)

**COOLIDGE, ARIZ**  
**NDB-B**

AWOS-3 Casa Grande 132.17		PHOENIX APPROACH 124.9 123.7		COOLIDGE MUN CTAF 123.07	
<i>NDB</i> KCKY <b>1150</b>	<i>Final</i> <i>Apch Crs</i> <b>113°</b>	<i>Mandatory Alt</i> <b>SARTA</b> <b>2100'</b> (526')	<i>MDA (H)</i> <b>2100'</b> (526')	<i>Apt Elev</i> <b>1574'</b>	
<b>MISSED APCH:</b> Climb to 2600' then climbing RIGHT turn to 4000' inbound TFD VOR R-076 to PALMA INT / D21.3 TFD then direct KCKY and hold.					 MSA TFD VOR
1. Reception of TFD VOR DME required. 2. Use Casa Grande Altimeter setting, if not available use Phoenix Altimeter setting. 3. Use extreme caution for PJE SE of Airport					



<i>Gnd speed-Kts</i>	70	90	100	120	140	160	2600'	4000'	TFD	TO PALMA
<i>KCKY to SARTA 3.03°</i>	377	485	539	647	755	862	↑	↻	114.8	then
<i>MAP at COOLI</i>									R-076	DCT KCKY

STRAIGHT-IN LANDING	CIRCLE-TO-LAND Not Authorized Southeast of Airport	
	A	2100' (526') - 3
NOT APPLICABLE	B	2100' (526') - 3
	C	NA
	D	NA

CHANGES: major corrections, Apt Elev, Minima, DME distances