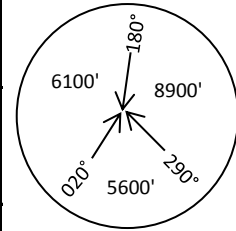


SE Practice Area - 122.85
 KFFZ ATIS - 118.25
 KFFZ TOWER - 124.6

Apt Elev
 1394'

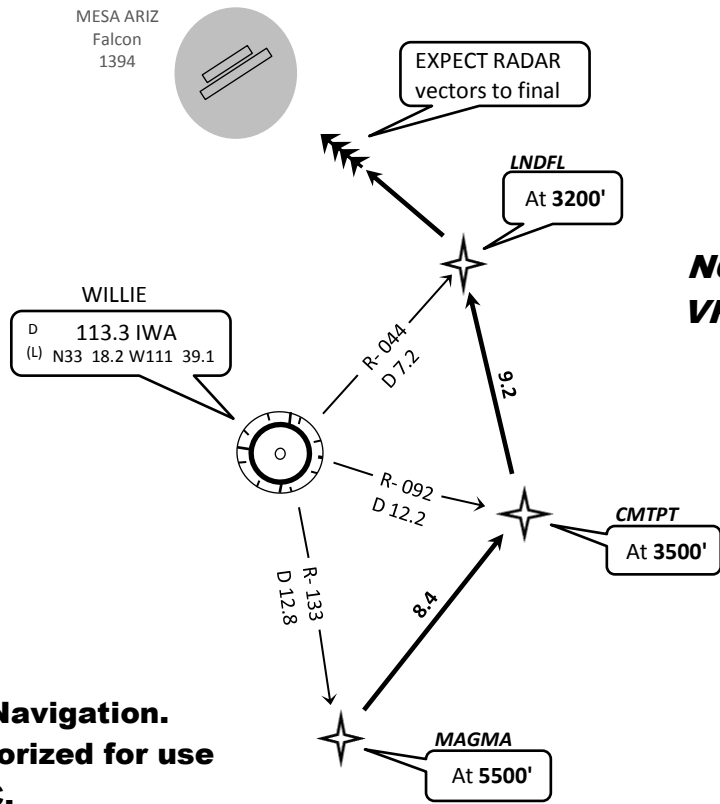
Trans level: FL 180 Trans alt: 18000'



MSA KFFZ

1. Use Point-to-Point navigation if GPS waypoints are unavailable.
2. Use Point-to-Point navigation to reach MAGMA intersection.
3. Expect RADAR vectors prior to reaching 4 n.m. from KFFZ.

SFA ONE RNAV ARRIVAL (SFA1.MESA)



**NOT TO SCALE
 VFR USE ONLY**

**Not For Navigation.
 Not authorized for use
 with ATC.**

ROUTING

From Magma to CMTPT, then as depicted to LNDFL, then direct KFFZ.

LANDING

Expect radar vectors to final Rwy 4/22 prior to being 4 n.m. from KFFZ.

Expect clearance for visual approach to Rwy 4/22 no later than 1 n.m. from Rwy and above 500' AGL.