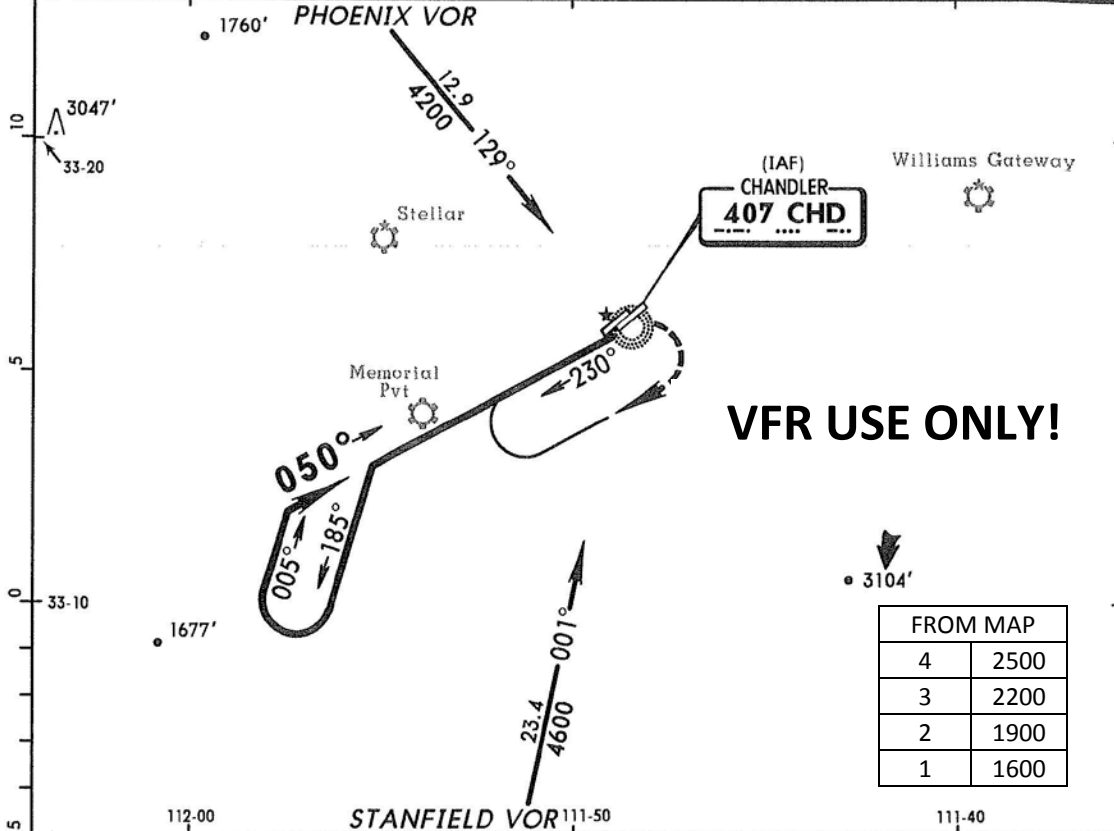


KCHD
 CHANDLER MUN

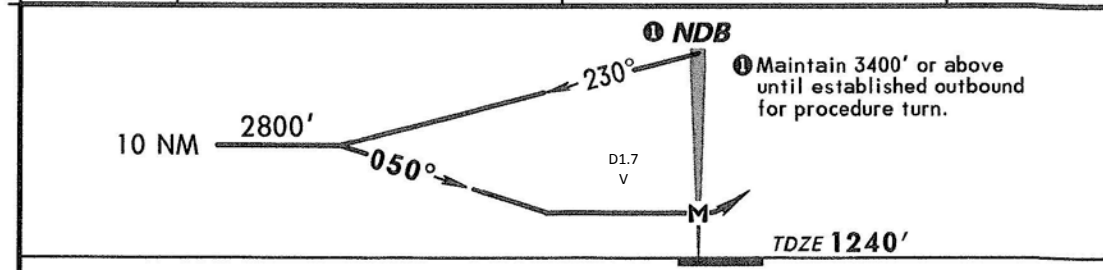
JEPPesen
 10 FEB 06 (26-1)

SFA CHANDLER, ARIZ
 NDB Rwy 4R

ATIS (AWOS-3 when Twr inop) 128.32		PHOENIX Approach (R) 123.7	*CHANDLER Tower (North and West) (South and East) CTAF 126.1 133.1		*Ground 124.4
NDB CHD 407	Final Apch Crs 050°	No FAF	MDA(H) 1780' (540')	Apt Elev 1243'	TDZE 1240'
MISSED APCH: Climbing RIGHT turn to 3000' in CHD NDB holding pattern.					
Alt Set: INCHES		Trans level: FL 180		Trans alt: 18000'	
1. Pilot controlled lighting 126.1.					MSA CHD NDB



VFR USE ONLY!



REIL	3000'	CHD
PAPI-L	RT	407
		HOLDING PATTERN

STRAIGHT-IN LANDING RWY 4R		CIRCLE-TO-LAND	
MDA(H) 1780' (540')		MDA(H)	
A	1	90	1780' (537') - 1
B	1 1/2	120	1780' (537') - 1 1/2
C	NA	140	NA
D	NA	D	NA

TERPS

① When VGSI inop, circling Rwy 4L not authorized at night.