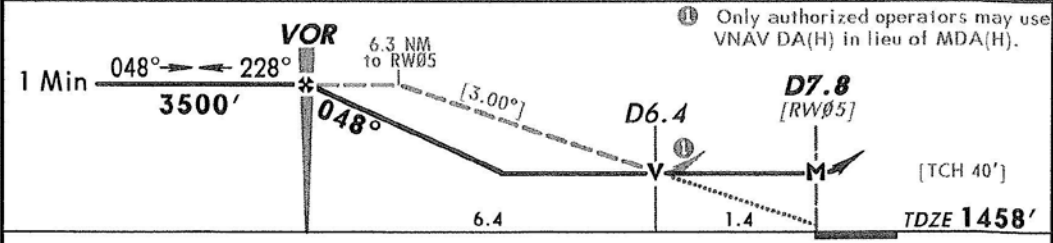
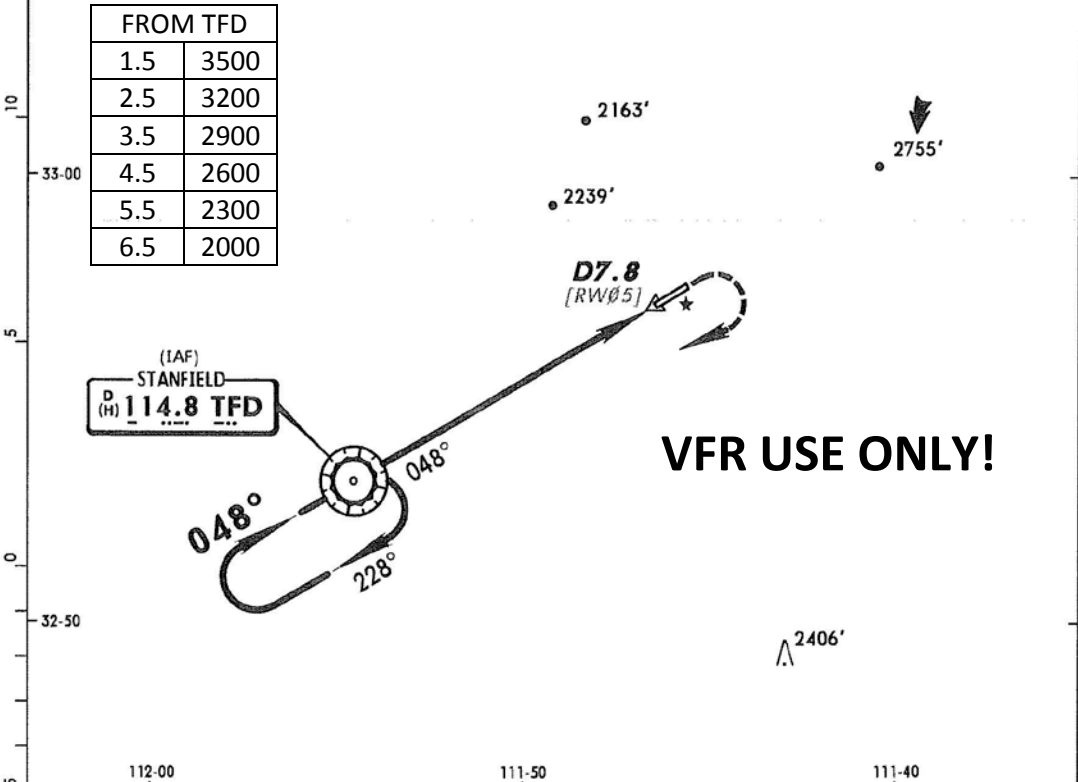


KCGZ/CGZ
CASA GRANDE MUN

JEPPESSEN
 22 APR 05 **(13-1)**

CASA GRANDE, ARIZ
 SFA **VOR Rwy 5**

AWOS-3 132.17		ALBUQUERQUE Center (R) 125.4		PRESCOTT Radio 122.1G 114.8T		CASA GRANDE MUN UNICOM CTAF 122.7
VOR TFD 114.8	Final Apch Crs 048°	Minimum Alt VOR 3500' (2042')	MDA(H) 1960' (502')	Apt Elev 1464' TDZE 1458'		
MISSED APCH: Climb to 2200', then climbing RIGHT turn to 3500' direct TFD VOR and hold.						<p>MSA TFD VOR</p>
Alt Set: INCHES 1. Pilot controlled lighting 122.7.		Trans level: FL 180		Trans alt: 18000'		



Gnd speed-Kts	70	90	100	120	140	160	MALSR VASI	2200'	3500'	D	TFD 114.8
Descent angle [3.00°]	372	478	531	637	743	849		↑	RT		
MAP at D7.8 or VOR to MAP	7.8	6:41	5:12	4:41	3:54	3:21		2:56			

STRAIGHT-IN LANDING RWY 5				CIRCLE-TO-LAND			
MDA(H) 1960' (502')				MDA(H)			
RAIL out		ALS out		RAIL out		ALS out	
A	1/2	3/4	1	1960' (496')-1			
B							
C	NA			NA			
D							

CHANGES: TDZE, minimums.