

CGAPH SOUTHEAST PRACTICE AREA STANDARDIZED ARRIVAL AND DEPARTURE ROUTINGS AND AIRWORK ALTITUDE LIMITATIONS

BACKGROUND

- THERE WILL BE INCREASING SCHEDULED AIR SERVICE INTO KIWA (WILLIAMS GATEWAY AIRPORT) IN THE NEAR FUTURE
- CURRENTLY ALLEGIANT AIR HAS 17 FLIGHTS A DAY INTO KIWA- THIS NUMBER WILL BE INCREASING SOON.
- ALLEGIANT AIR HAS HAD A NUMBER OF RESOLUTION ADVISORIES (RA) RESULTING FROM CONFLICTS WITH VFR TRAFFIC IN THE PRACTICE AREA. (SEE SLIDE 4)
- RA'S RESULT IN "FLY UP" OR "FLY DOWN" COMMANDS AND MUST BE FOLLOWED BY THE FLIGHT CREW. RA's MUST BE REPORTED TO ATC.
- A NEW STAR WILL BE INITIATED FOR KIWA FOR HIGH PERFORMANCE TURBINE AIRCRAFT (SEE SLIDE 5).

CGAPH SOUTHEAST PRACTICE AREA STANDARDIZED ARRIVAL AND DEPARTURE ROUTINGS AND AIRWORK ALTITUDE LIMITATIONS

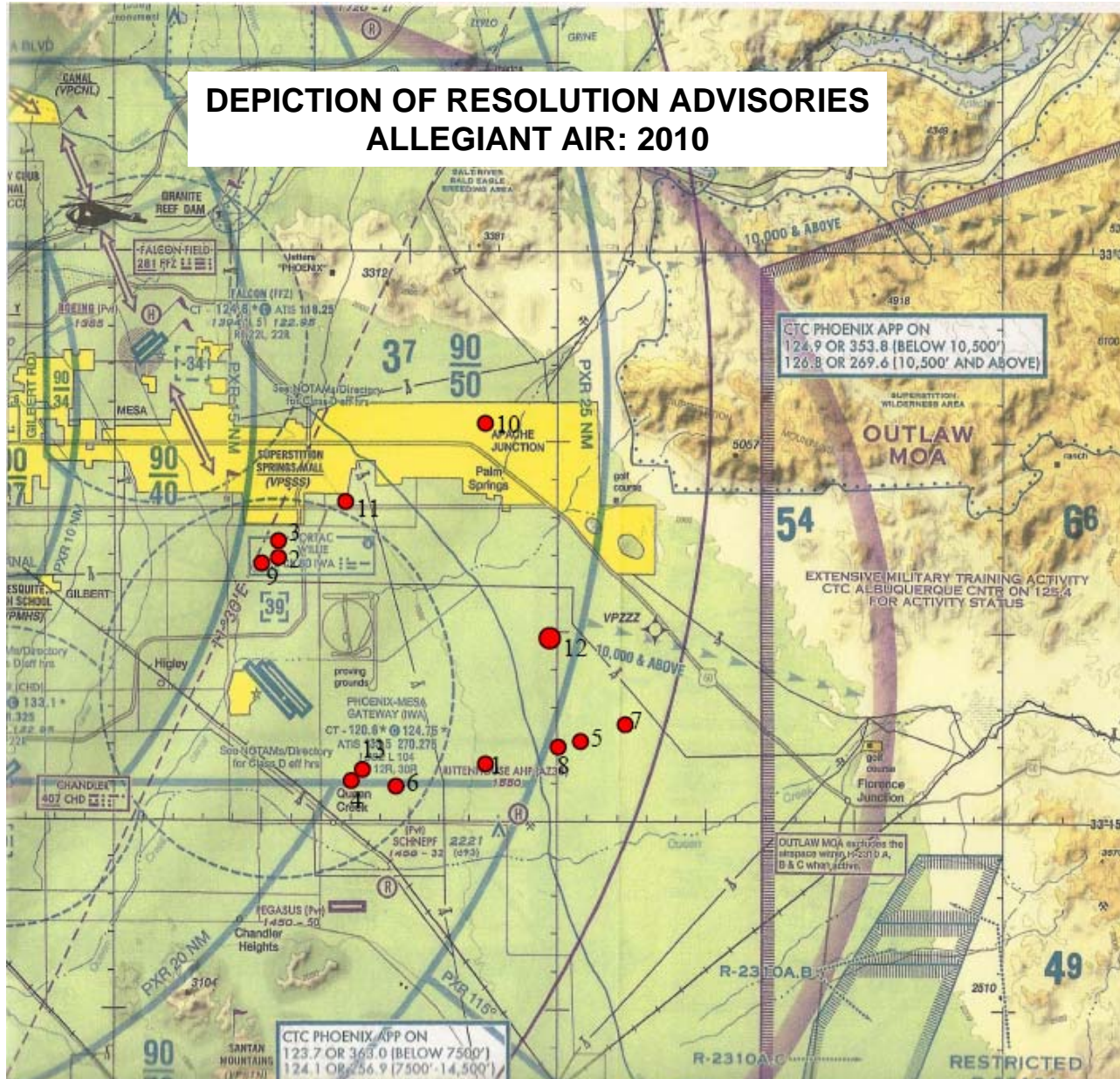
CONTINUED

- IN ORDER TO ENSURE ADEQUATE SEPARATION FROM ARRIVING AIR CARRIER TRAFFIC AND TO REDUCE TRAFFIC CONFLICTS IN S.E. PRACTICE AREA, CGAPH HAS AGREED TO FOLLOWING:
 - All VFR Departures from KFFZ to South or Southeast WILL follow the "Renaissance Departure" Procedure.
 - All VFR Arrivals from the South or Southeast WILL follow the "Cement Plant Arrival" Procedure.
 - There is now an altitude limit of 3000' AGL in the S.E. Practice Area in the airspace designated by the A.J. Landfill, Renaissance Festival, Pegasus, and Railroad Intersection (See Slide 8)
NOTE: This does not supercede or amend program or operations manual minimum altitudes for stalls, slow flight or unusual attitude recoveries!

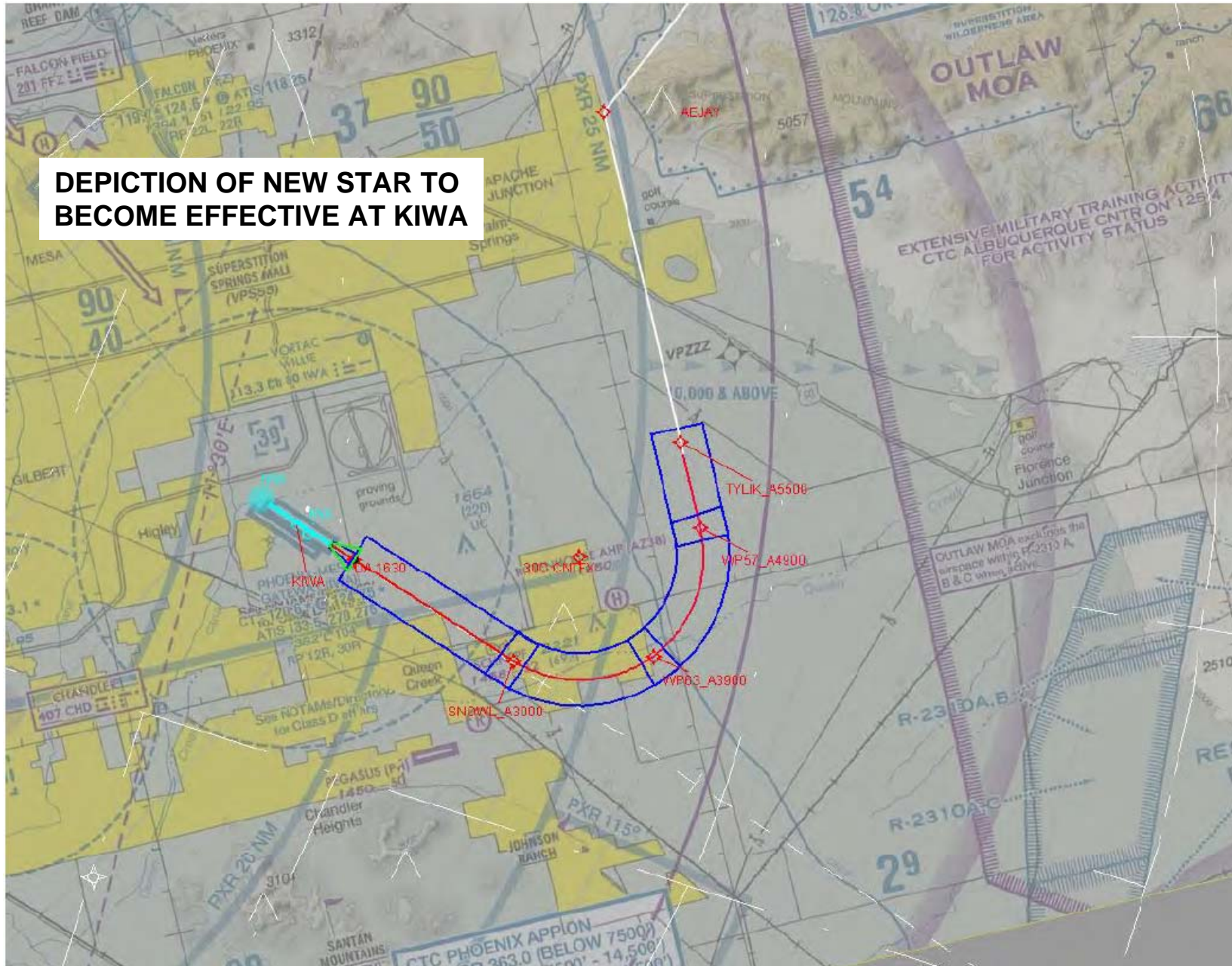
CGAPH SOUTHEAST PRACTICE AREA STANDARDIZED ARRIVAL AND DEPARTURE ROUTINGS AND AIRWORK ALTITUDE LIMITATIONS

CONTINUED

- EFFECTIVE TIME AND DATE: 0600 14 OCTOBER, 2011
- ALL INSTRUCTORS AND STUDENTS WILL BE GIVEN A PILOT GUIDE WITH THE PROCEDURES DEPICTED. PICK UP GUIDE AT FRONT DESK.
- THESE ARE MANDATORY COMPANY PROCEDURES AND PHOENIX TRACON WILL BE MONITORING KFFZ VFR TRAFFIC AND PROVIDING FEEDBACK TO CGAPH SAFETY MANAGER.
- IN ADDITION TO THE ABOVE, REMAIN CLEAR OF THE ILS CORRIDOR AT KIWA BETWEEN 3000-4500' MSL UP TO 10 NM FROM KIWA.



DEPICTION OF NEW STAR TO BECOME EFFECTIVE AT KIWA





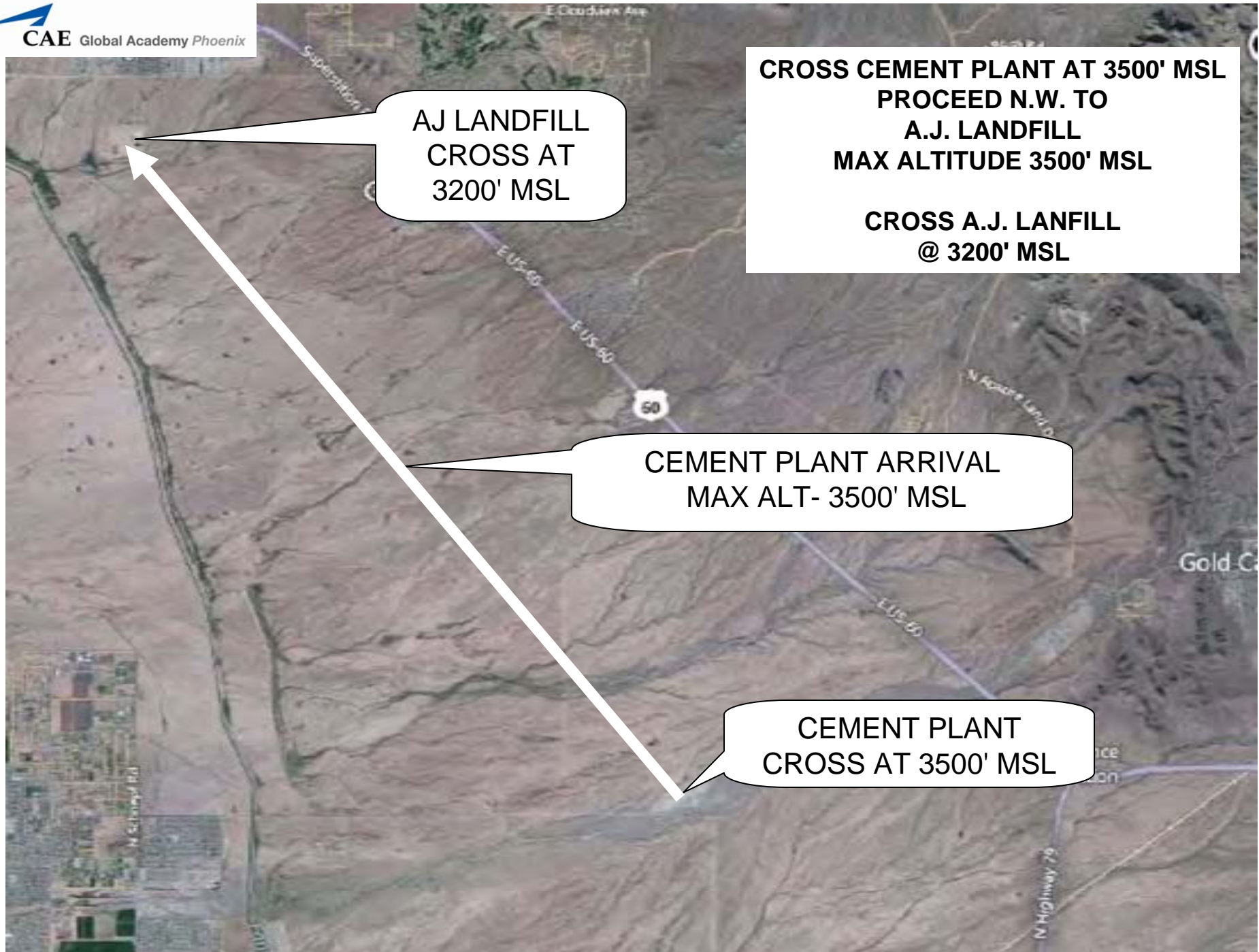
POINT "W"

RENAISSANCE DEPARTURE:
MAX ALT- 4300' MSL

RENAISSANCE
CROSS AT 4300' MSL

**CROSS POINT "W" AT 3700' MSL OR ABV
PROCEED S.E. TO
RENAISSANCE FESTIVAL
MAX ALTITUDE 4300' MSL**

**CROSS RENAISSANCE FESTIVAL
@ 4300' MSL**



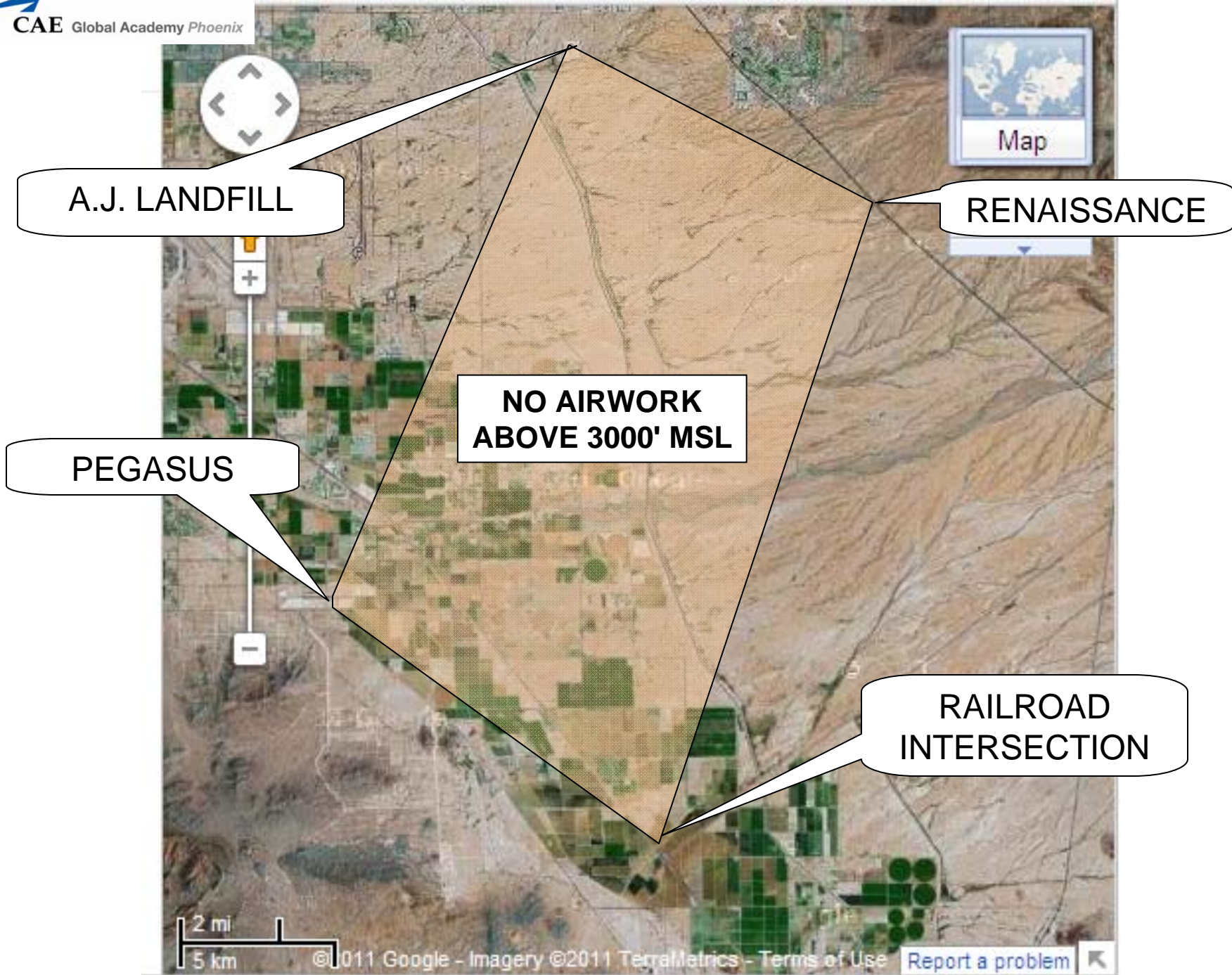
AJ LANDFILL
CROSS AT
3200' MSL

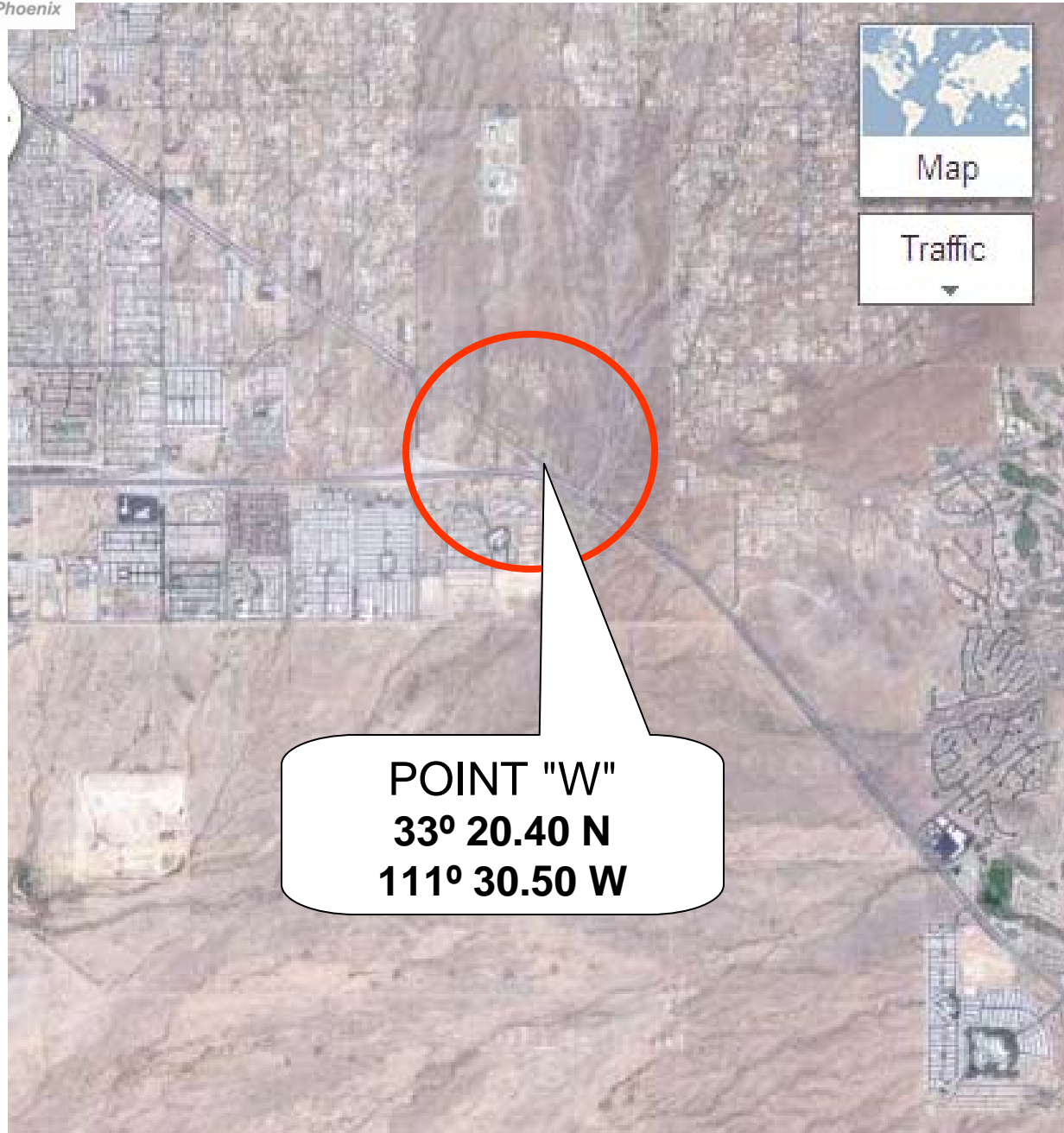
CROSS CEMENT PLANT AT 3500' MSL
PROCEED N.W. TO
A.J. LANDFILL
MAX ALTITUDE 3500' MSL

CROSS A.J. LANFILL
@ 3200' MSL

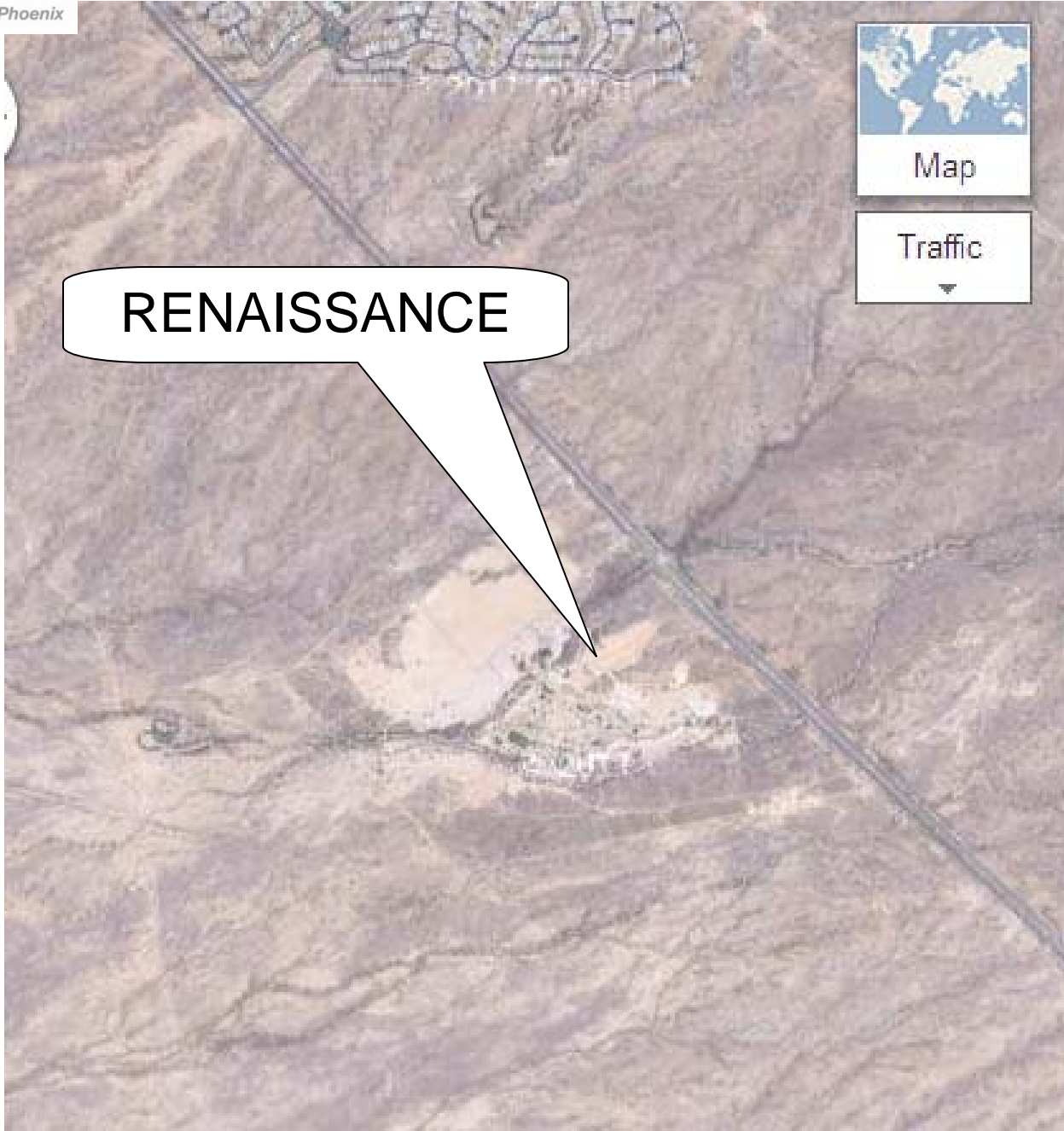
CEMENT PLANT ARRIVAL
MAX ALT- 3500' MSL

CEMENT PLANT
CROSS AT 3500' MSL





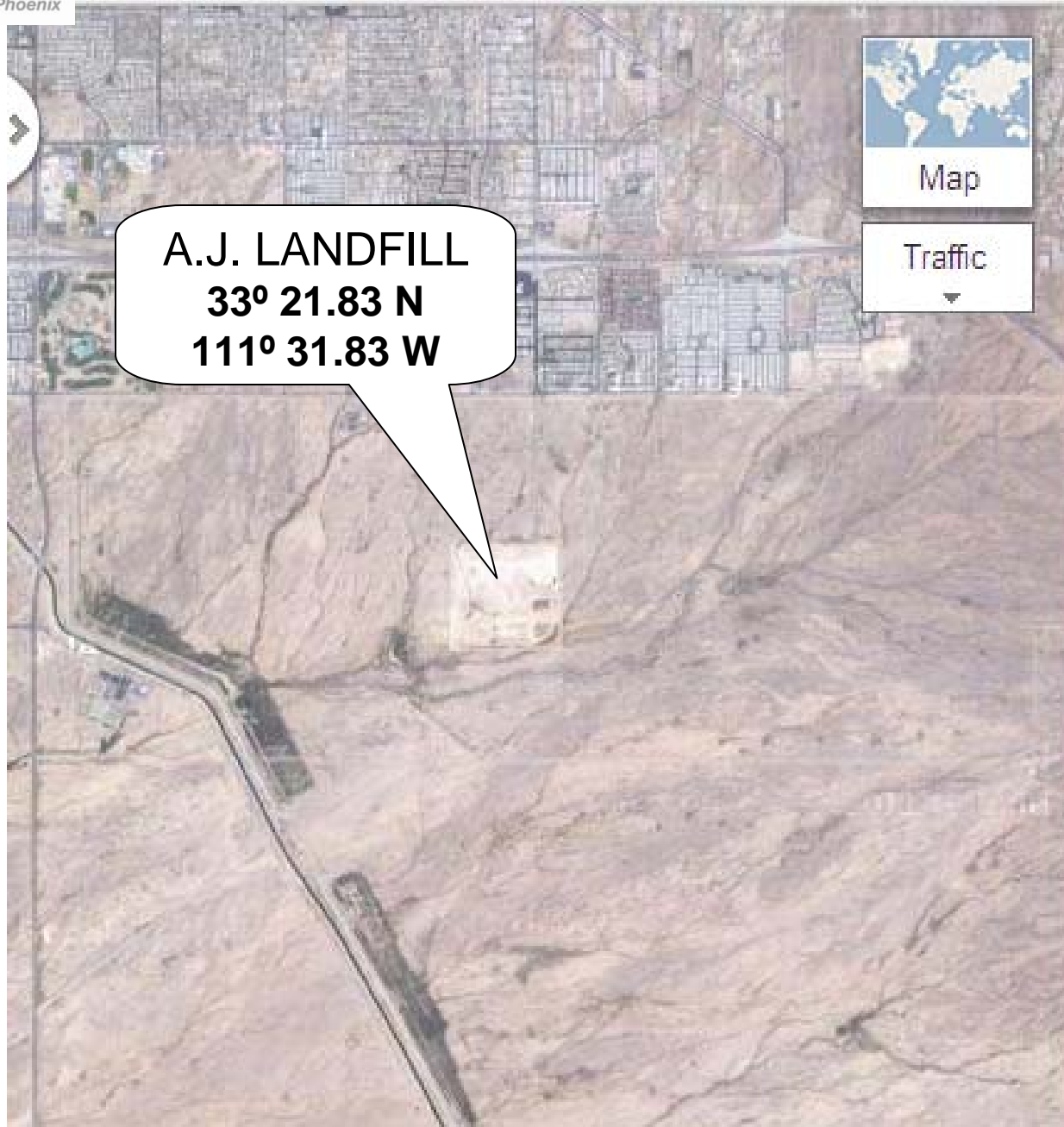
POINT "W"
33° 20.40 N
111° 30.50 W

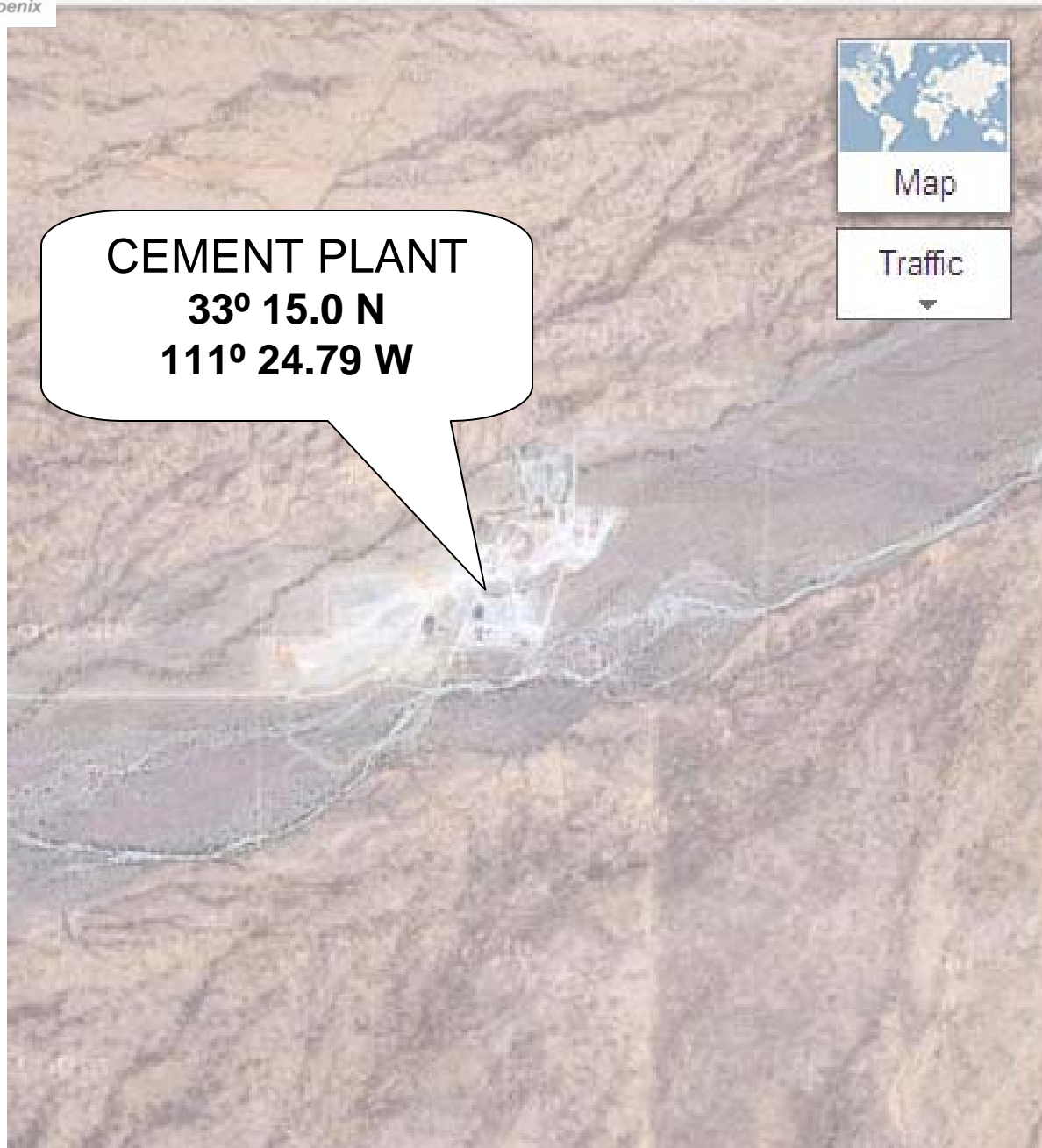


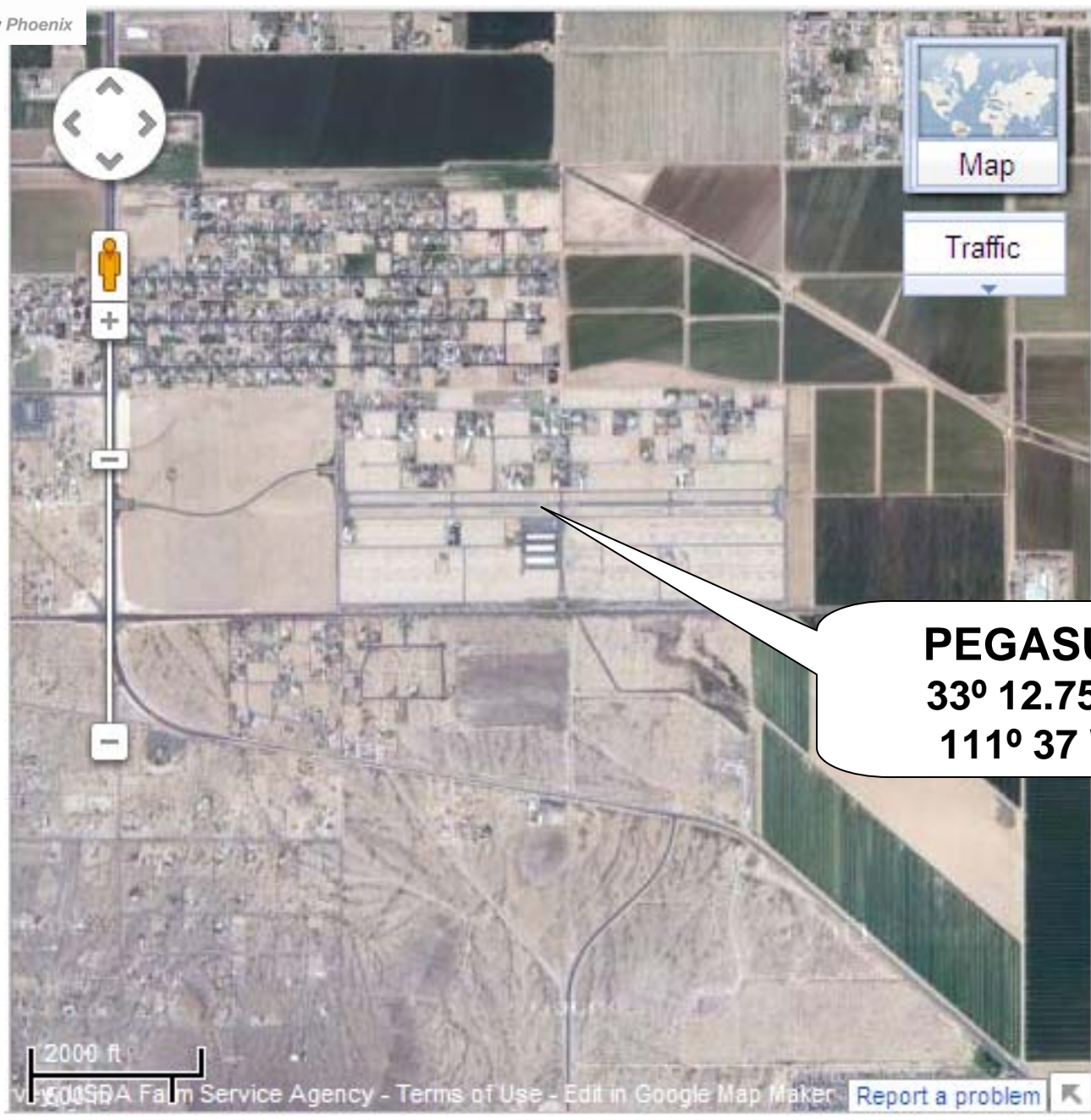
RENAISSANCE

Map

Traffic







PEGASUS
33° 12.75 N
111° 37 W

