

## LETTER OF AGREEMENT

Effective: May 15, 2017

SUBJECT: Phoenix-Mesa Gateway Airport VFR Arrival and Departure Procedures

**1. PURPOSE:** To provide a Letter of Agreement (LOA) for VFR arrival and departures procedures in the local Phoenix-Mesa Gateway Airport (KIWA) area in order to safely separate and expedite the flow of student flight training and commercial service, military, and general aviation aircraft traffic.

**2. DISTRIBUTION:** This LOA is distributed to Phoenix-Mesa Gateway FAA Contract Tower (FCT), Airline Transport Professionals (ATP), CAE Oxford Aviation Academy (CAE/OAA), University of North Dakota Aerospace FTC (UND), and Serco Inc.

**3. CANCELLATION:** Phoenix-Mesa Gateway Airport VFR Arrival and Departure Procedures dated August 15, 2016.

**4. SCOPE:** The procedures outlined herein are for use in the conduct of all VFR arrival and departure procedures to and from the Phoenix-Mesa Gateway Airport. These procedures apply only during Phoenix-Mesa Gateway FAA Federal Contract Tower's hours of operation. The provisions of this agreement do not apply when conducting practice instrument approaches.

**5. RESPONSIBILITIES:** Phoenix-Mesa Gateway FCT, ATP, CAE/OAA and UND must ensure all locally based operational personnel adhere to the provisions of this LOA.

### 6. VFR REPORTING POINTS:

- a. Gap: The lowest valley of the Santan Mountains located 10 NM South of IWA (depicted on the VFR Terminal Area Chart Phoenix "San Tan Mountains"). Highest peak 3104' MSL. (Visual Reference is East of the "Witches Hat")
- b. Santan: The highest mountain Peak of Santan Mountains located 10 NM South of IWA. 3104' MSL. (Visual Reference is slightly West of the Santan Mountain's highest peak)
- c. Johnson Ranch: Residential community located approximately 12 NM Southeast of IWA (depicted on the VFR Terminal Area Chart Phoenix "Johnson Ranch").
- d. Super Mall: Public shopping center located approximately 5.25 NM North/Northwest of IWA (depicted on the VFR Terminal Area Chart Phoenix "Superstition Springs Mall").
- e. Apache Junction: City located approximately 8NM Northeast of IWA (depicted on the VFR Terminal Area Chart Phoenix "Apache Junction").

*Note: The VFR reporting points (above) are for use with the departure and arrival procedures (below). Depending on the runways in use, not all procedures will be applicable. See "procedures" below for specific guidance.*

## **7. PROCEDURES:**

### **a. Runways 12:**

#### a) Departures

1. Climb and remain below 3000' MSL until exiting IWA Class D airspace.
  - a) Apache Junction: All departures heading North through Northeast or joining the A. J. Arrival into FFZ, depart IWA Class D airspace on a left crosswind departure, toward Apache Junction.
  - b) Johnson Ranch: All Southeast through Southwest departures (departure heading 120-230), depart IWA Class D airspace towards Johnson Ranch (suggested heading 140).
  - c) Super Mall: Aircraft intending to land at FFZ or transition through FFZ's airspace, depart IWA on a wide left downwind departure, remaining outside of IWA's VFR traffic pattern; preceding to the east-side the Super Mall.
  - d) All other departures, proceed as instructed by Tower.

#### a) Arrivals

1. Enter IWA Class D airspace at or below 3000' MSL descending to traffic pattern altitude
  - a) Apache Junction: From the North through Northeast (arrivals from 360-040) report over Apache Junction and proceed inbound as instructed by the tower.
  - b) Gap: From the Southeast through Southwest (arrivals from 120-230) report over the Gap and proceed inbound as instructed by the tower.
  - c) Super Mall: Aircraft departing from or transitioning through Falcon Field (FFZ) airspace, report over the West-Side of the Super Mall and proceed inbound as instructed by the tower.
  - d) All other arrivals, proceed as instructed by Tower.

### **b. Runway 30:**

#### a) Departures

1. Climb and remain below 3000' MSL until exiting IWA Class D airspace.
  - a. Apache Junction: All departures heading North through Northeast or joining the A. J. Arrival into FFZ, depart IWA

Class D airspace on a right crosswind departure, toward Apache Junction.

- b. Santan: All departures heading Southeast through Southwest (departure heading 120-230), depart IWA Class D airspace towards the Santan Peak. After departure turn left over the Santan Highway (suggested heading 190-210 then proceed slightly west of the Santan Mountain's highest peak.
  - i. To the extent possible, safety and workload permitting, Gateway FCT will delete the altitude restriction outbound on the Santan departure. Pilots must ensure to remain clear of the Phoenix Class Bravo airspace unless proper coordination has been established.
- c. Super Mall: Aircraft intending to land at FFZ or transition through FFZ's airspace, depart IWA toward the Super Mall (suggested heading 340).
- d. All other departures, proceed as instructed by Tower.

b) Arrivals

- 1. Enter IWA Class D airspace at or below 3000' MSL descending to traffic pattern altitude.
  - a. Apache Junction: From the North through Northeast (arrivals from 360-040) report over Apache Junction and proceed inbound as instructed by the tower.
  - b. Gap: From the Southeast through Southwest (arrivals from 120-230) report over the Gap (East of the San Tan Peak) and proceed inbound as instructed by the tower.
- 2. All other arrivals, proceed as instructed by Tower.

Appendix 1 – Graphic

Runways 30 in Use: Apache Junction Departure / San Tan Peak Departure / Super Mall Departure / Apache Junction Arrival / Gap Arrival

Appendix 2 – Graphic

Runways 12 in Use: Apache Junction Departure / Johnson Ranch Departure / Super Mall Departure / Apache Junction Arrival / Gap Arrival / Super Mall Arrival

---

Shawn Boyd  
Air Traffic Manager  
Phoenix-Mesa Gateway FCT

---

Josh Klein  
Site Manager  
Airline Transport Professionals

---

James Barry  
Chief Instructor  
CAE Oxford Aviation Academy

---

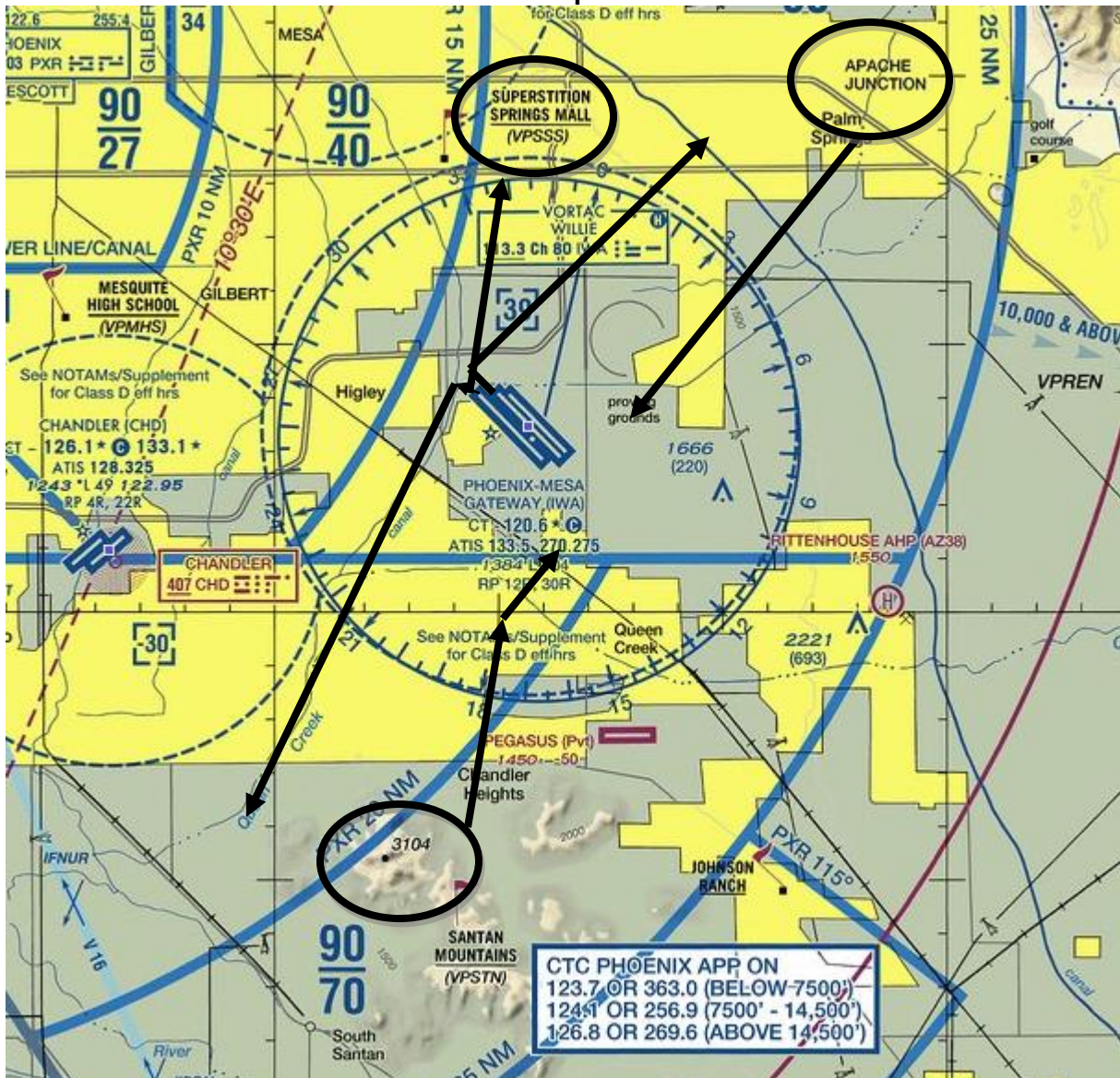
Rex Ginder  
Site Manager  
University of North Dakota Aerospace FTC

# Appendix 1

## Runways 30

Departures:  
Apache Junction  
San Tan Peak  
Super Mall

Arrivals:  
Apache Junction  
Gap





## Appendix 2

### Runways 12

#### Departures:

Apache Junction  
Johnson Ranch  
Super Mall

#### Arrivals:

Apache Junction  
Gap  
Super Mall

