

KFFZ Taxiway Alpha Construction – Phase 2

Attention Students and Instructors:

November 23, 2016

Due to the ongoing construction at the airport to re-align taxiway Charlie to mirror taxiway Alpha with a holding bay:

1. **The South Runway (4R/22L) will be closed from November 28th beginning at 0700 to 1600 November 30th. (These procedures in effect).**
2. The North Runway (4L/22R) will be closed from 0700 to 1600 December 1st. (FIF regarding Phase 1 in effect)
3. **The South Runway (4R/22L) will be closed from 0700 December 2nd to 1600 December 19th. (These procedures in effect).**

When runway 4R/22L is closed, taxiways Bravo and Alpha will only way to connect to the North runway for takeoff and landing. During this phase, taxiway E4 North of Runway 4L/22R will remain open.

During single runway operations, patternwork is prohibited unless authorized by Tower.

Specific notes based on runway in use:

If Runway 4L is in use:

- Runups will be conducted in the 4R runup area or in the holding bay between the runways on Twy A. Pay attention to instructions from ground on where to conduct runups. Default will likely be 4R runup area.

If Runway 22R is in use:

- Runups will be conducted in the 22L runup area. Expect lengthy taxi instructions such as, "Taxi to Runway 22R via D, D6, B, E3, E, Hold short of Runway 22R."
- Sometimes Ground may instruct you to hold short of runway 22L (even though it is not in use) to allow opposite direction traffic on Bravo to cross before you enter Bravo Taxiway.
- When crossing 22L on Bravo be cautious as to your taxi instructions regarding what taxiway you are to use when you cross (D5 or D6). The same is true when crossing 22R (E2 or E3).

DO NOT CROSS A RUNWAY IF YOU DO NOT HAVE CLEARANCE – IF IN DOUBT – ASK!!!!

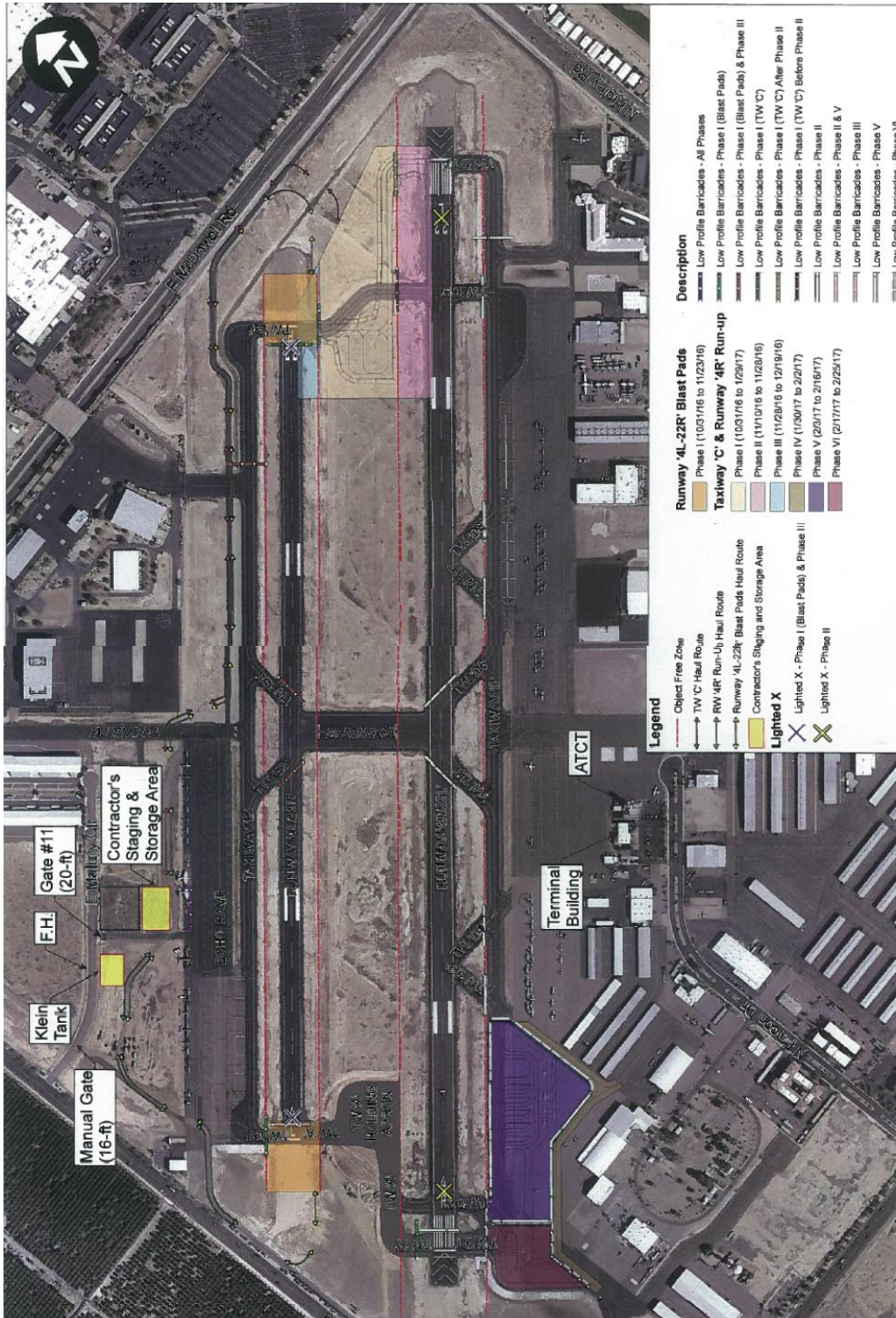
If the pattern becomes busy, and Tower is not able to handle your request for a landing, they may tell you to remain outside the Class Delta, or they will not respond to you after multiple attempts. In this case, it is recommended to circumnavigate the Class D to the North (see third diagram below). While doing so, monitor Falcon Tower and await further instructions when tower workload allows. If you happen to fly into NE practice area without receiving a call back from Tower, hold in the vicinity of the Fountain Arrival and use caution for other traffic. Be mindful of altitude restrictions such as the Class Bravo.

Instructors: Please be sure to review this FIF with your students to be sure they are capable of its accomplishment.

Attached is the overview of the construction.

Fly (and taxi!) Safely,
The Phoenix Flight Safety Team

KFFZ Taxiway Alpha Construction – Phase 2



MESA - FALCON FIELD AIRPORT (FFZ)
RUNWAY '4L-22R' BLAST PADS, TAXIWAY 'C', & RUNWAY '4R' RUN-UP
OVERALL PHASING & BARRICADE PLAN

Dibble Engineering



Legend	Description
Object Free Zone	Low Profile Barricades - All Phases
TW 'C' Haul Route	Low Profile Barricades - Phase I (Blast Pads)
RW '4R' Run-Up Haul Route	Low Profile Barricades - Phase I (Blast Pads) & Phase II
Runway '4L-22R' Blast Pads Haul Route	Low Profile Barricades - Phase I (Blast Pads) & Phase III
Contractor's Staging and Storage Area	Low Profile Barricades - Phase I (TW 'C')
Lighted X	Low Profile Barricades - Phase II (TW 'C') After Phase II
Lighted X - Phase I (Blast Pads) & Phase III	Low Profile Barricades - Phase II (TW 'C') Before Phase II
Lighted X - Phase II	Low Profile Barricades - Phase II
	Low Profile Barricades - Phase II & V
	Low Profile Barricades - Phase III
	Low Profile Barricades - Phase V
	Low Profile Barricades - Phase VI

Runway '4L-22R' Blast Pads	Taxiway 'C' & Runway '4R' Run-up
Phase I (1/03/16 to 1/23/16)	Phase I (1/03/16 to 1/23/17)
Phase II (1/28/16 to 1/28/16)	Phase II (1/28/16 to 1/28/16)
Phase III (1/28/16 to 1/28/16)	Phase III (1/28/16 to 1/28/16)
Phase IV (1/30/17 to 2/2/17)	Phase IV (1/30/17 to 2/2/17)
Phase V (2/17/17 to 2/25/17)	Phase V (2/17/17 to 2/25/17)
Phase VI (2/17/17 to 2/25/17)	Phase VI (2/17/17 to 2/25/17)