

**Attention all CAEOAA Phoenix flight crews:**

The 8<sup>th</sup> Annual Falcon Field Open House is occurring Saturday, March 26<sup>th</sup>, 2016 from 0900 to 1400 local time. This event will attract several thousand people, and have static aircraft displays and fly-overs. The Experimental Aircraft Association will be on the field giving rides for their Young Eagles program. Approximately 75 Young Eagles flights will occur between around 0830 and 1330 local time. This will cause significant increase in congestion and workload on the Tower. Therefore, we will need to restrict operations.

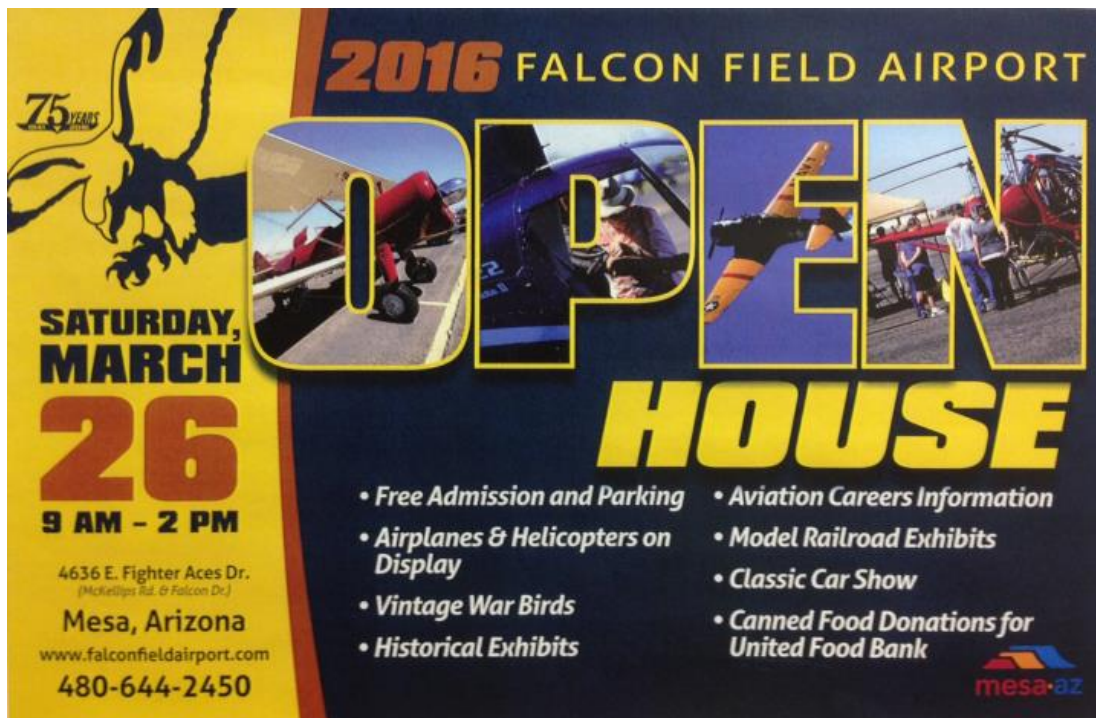
**Please obey the following restrictions Saturday, March 26<sup>th</sup> from 0830 to 1400 local time:**

- **NO solo flights** will be permitted to takeoff or land during this time. Cross-country solos are permitted to depart prior to 0830, as long as they arrive back at KFFZ after 1400.
- **NO patternwork** permitted.

Attachments below are from the Young Eagles Operations so you can be familiar with what they are doing.

Fly Safe,

CAE OAA Phoenix Safety Team



**75 YEARS**

**2016 FALCON FIELD AIRPORT**

**OPEN HOUSE**

**SATURDAY, MARCH 26**  
**9 AM - 2 PM**

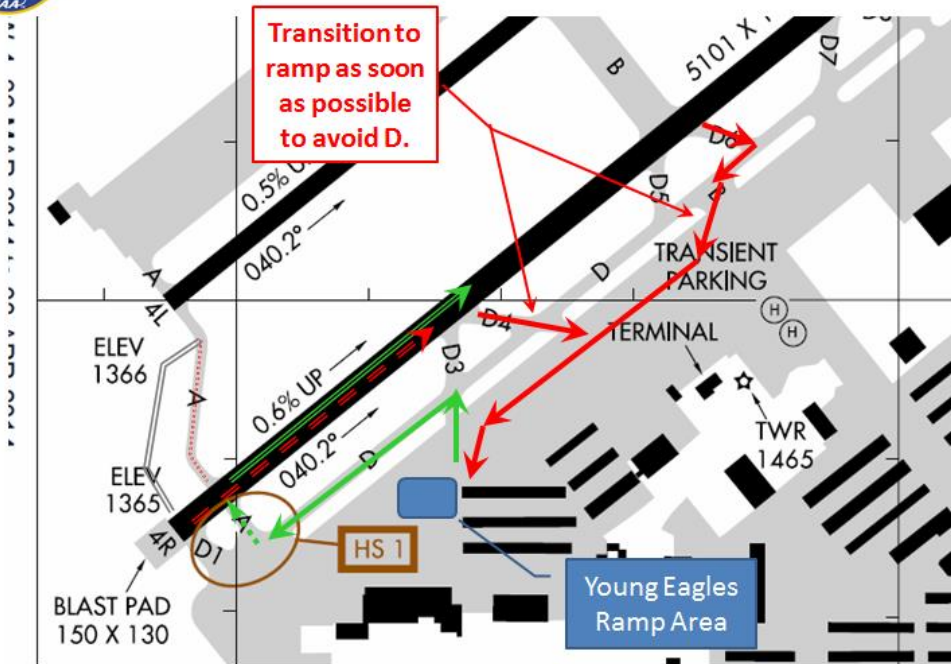
4636 E. Fighter Aces Dr.  
(McKellips Rd. & Falcon Dr.)  
Mesa, Arizona  
www.falconfieldairport.com  
480-644-2450

- Free Admission and Parking
- Airplanes & Helicopters on Display
- Vintage War Birds
- Historical Exhibits
- Aviation Careers Information
- Model Railroad Exhibits
- Classic Car Show
- Canned Food Donations for United Food Bank

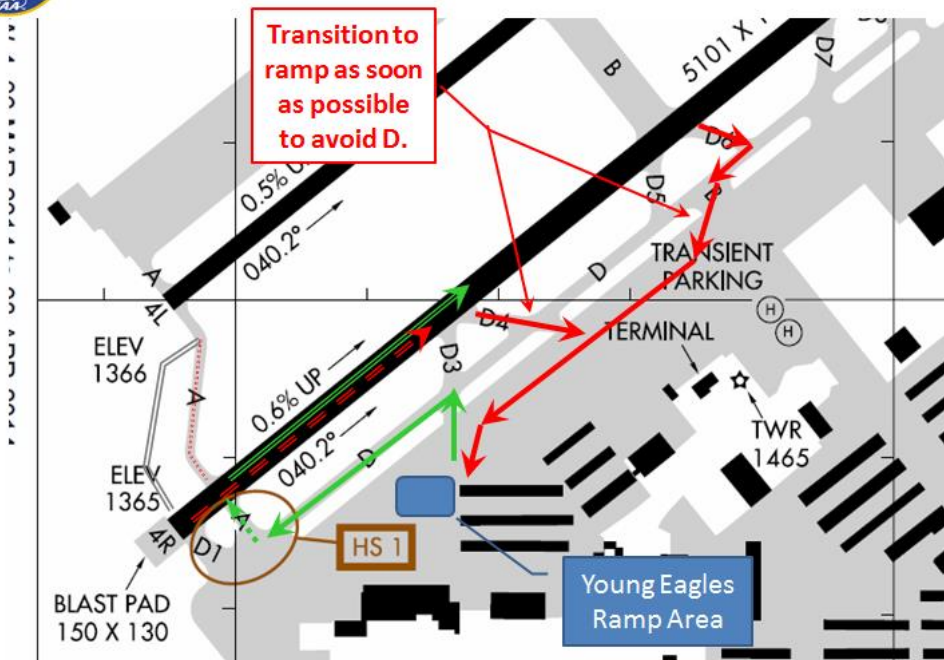
mesa·az



# Ground Flow for 4R – Intersection TO

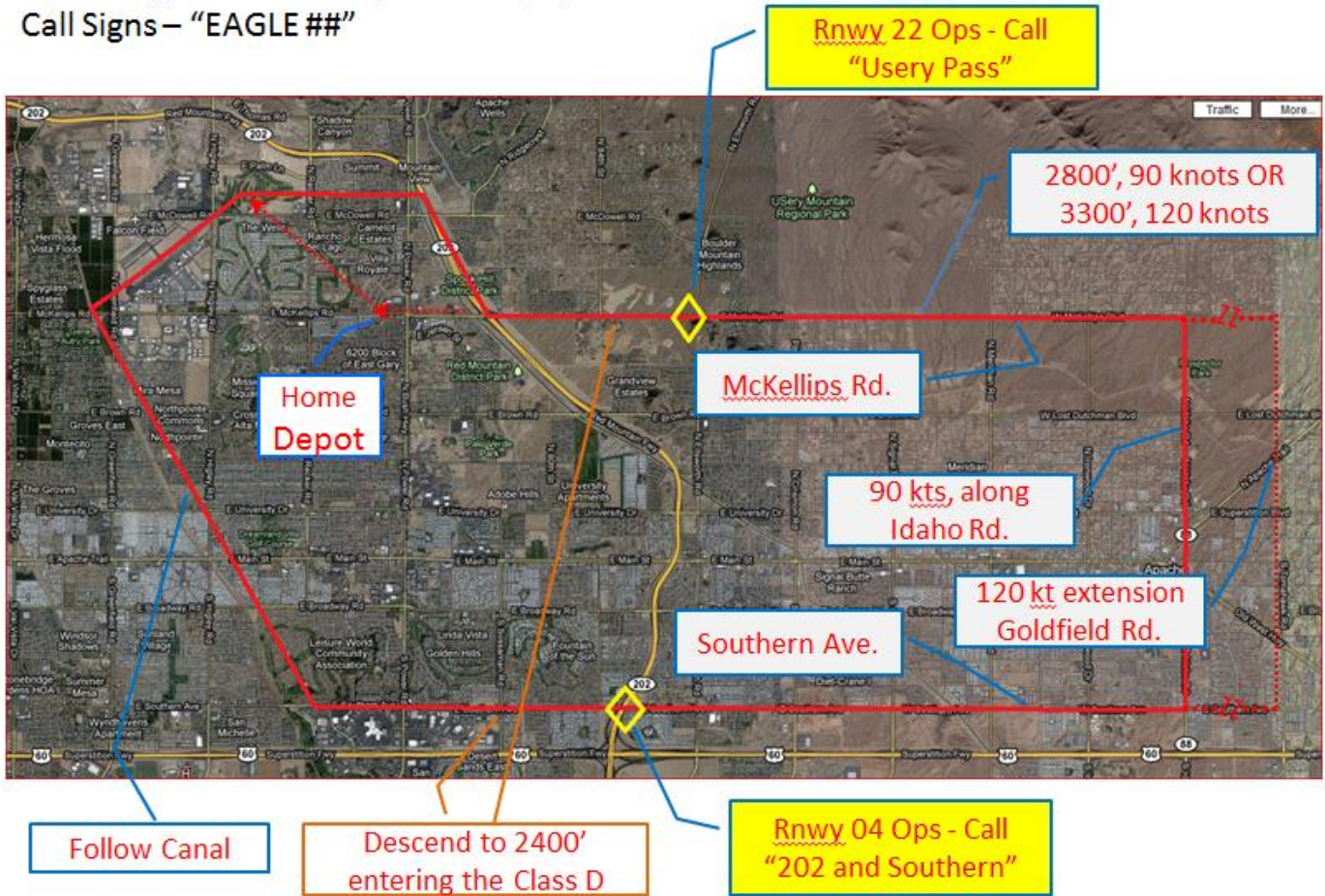


# Ground Flow for 4R – Intersection TO





Young Eagles Flights – 26 March, 0845-1300  
Operating from SW Ramp near display area.  
Call Signs – “EAGLE ##”





## EAA Chapter 228 Young Eagles

### General Comments:

- Pilots will use Eagle## call sign and stay on 124.6.
- Tower may take advantage of the experience and flexibility of the Young Eagles pilots to improve flow.
- Tower will stop YE takeoffs if there will be an airport closure. Tower may use the north runway for recoveries in this case.
- Pilots should do their run-ups, if necessary, before reaching the A or C intersection on D.
- Pilots will taxi back in on ramp as much as possible to keep Taxiway D clear for outbounds.

### Young Eagles Pilot Notes

- Minimum spacing for take-off or landing behind another aircraft is 3000'.
- Try to keep a mental picture of where other aircraft are from their radio calls. Maintain your separation.
- As per normal operations in non-movement areas, taxi via the ramp is at own risk.
- All aircraft will maintain constant speed (90 or 120) from level-off outbound until reaching 2400' inbound.
- Descend to 2400' smartly, but only after passing reporting point.
- Faster aircraft will descend on the North (right) side of the inbound leg after passing the reporting point. Slower aircraft will descend on the South (left) side.