

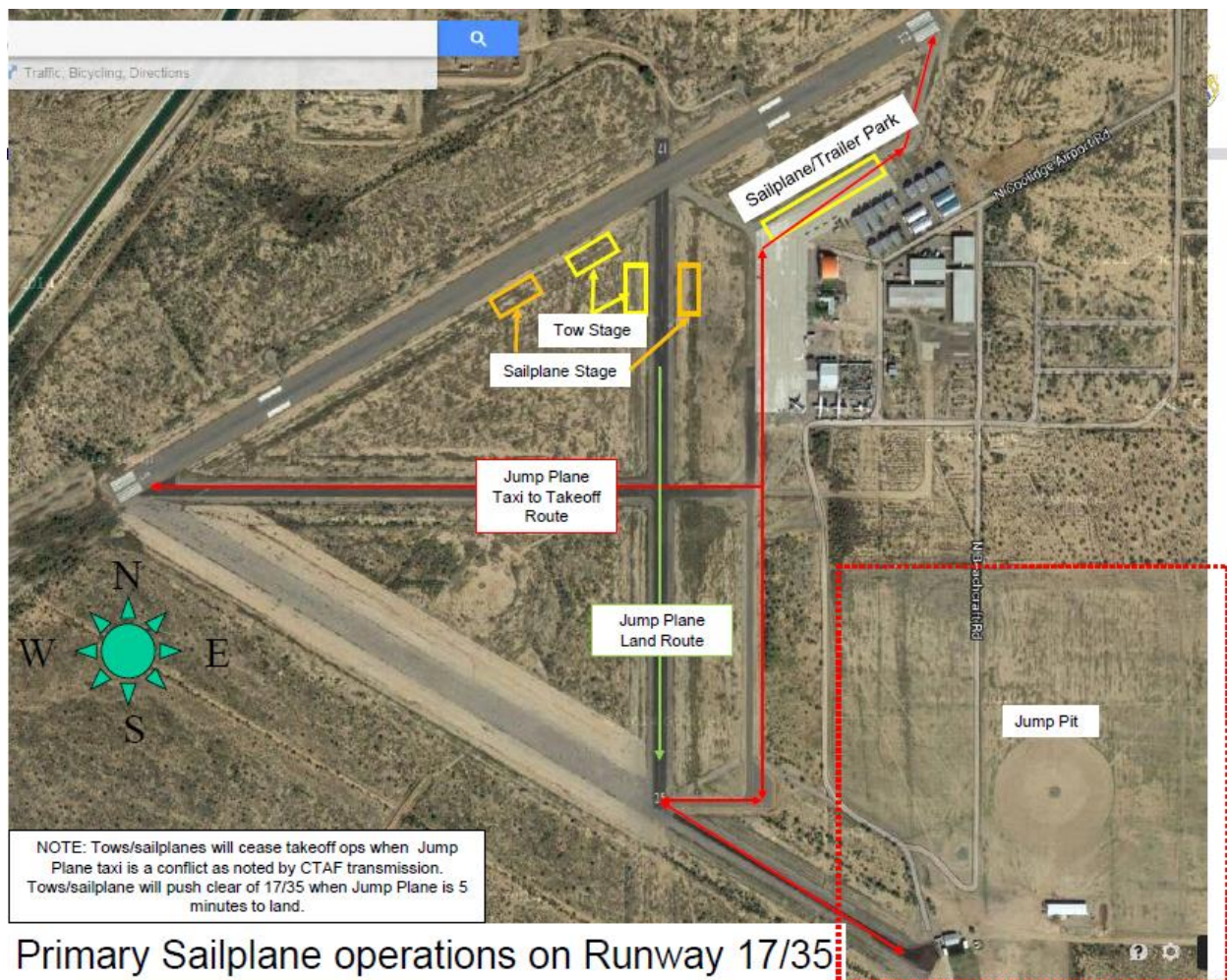
Attention CAE OAA Flight Crews:

Issued March 15th, 2016

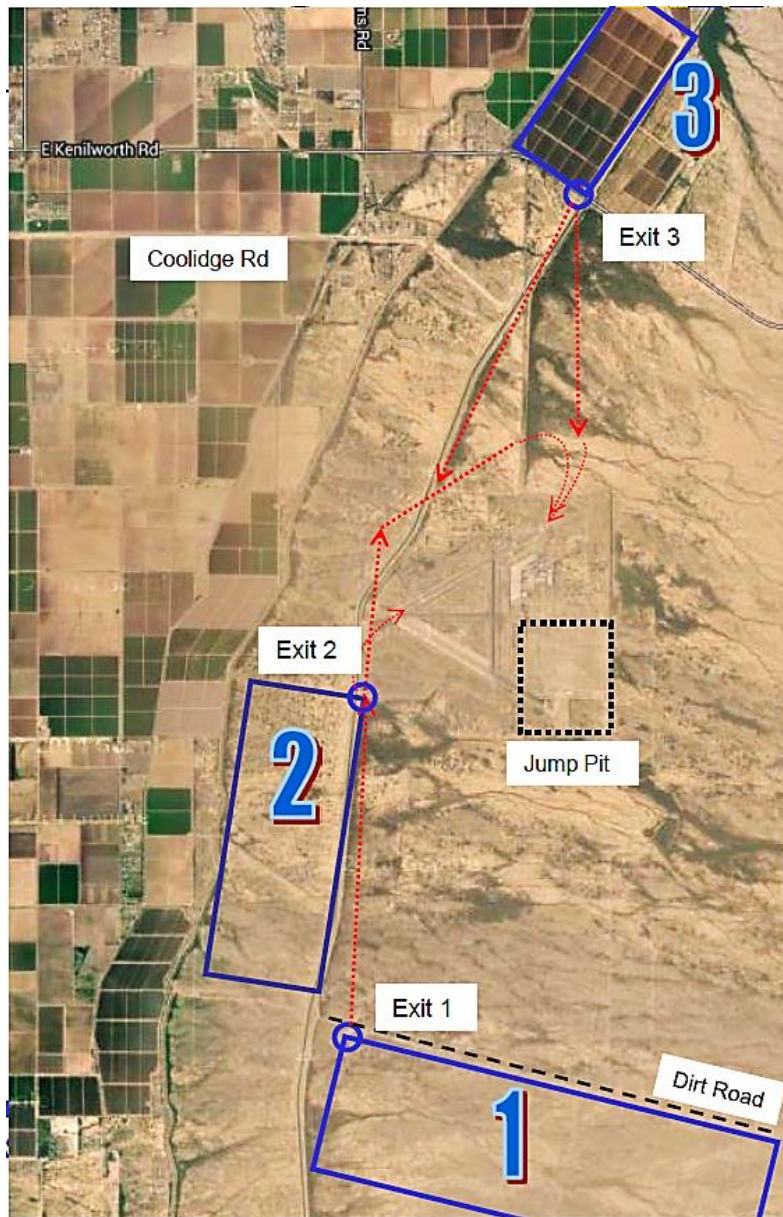
Beginning NOW, March 15th 2016 at 1230 local thru Saturday March 26th at 1400 local time there will be heavy **aerobatic** glider activity from the USAF Academy at Coolidge Airport (P08). The following restrictions will be in place during this time (see NOTAM for updated guidance):

- **NO** Solo operations within 5nm of Coolidge Airport.
- Dual flights are advised to avoid the airport. However, should you operate within 10nm of the airport please be monitoring the airport CTAF. Should dual flights enter the pattern, use extra vigilance for glider activity who have the right of way over aircraft.

Below are a couple of graphics which help describe their planned activities and aerobatic boxes:



Continued on next page...



- A brief summary from the Event Supervisor:
 - o We will be using up to 3 aerobatic areas (N, SW and S) for aerobatic training from 1,500'to 6,000' AGL.
 - o We will be operating on CTAF and will call into and out of the areas per our IFG. The Supervisor of Flying will be on CTAF and his call sign is "Overlord"
 - o We will enter a standard FAA pattern or an overhead
 - o We will normally stage our gliders/operate on 17 based on winds but will land on 05/23 and taxi clear. Time on 05/23 should be minimal unless winds shift
 - o Gliders/tow planes will be cleared off of the runway for powered takeoffs and recoveries to 17/35
 - o As a reminder, Gliders will have landing priority over powered aircraft, but that having been said, they all have a 45:1 glide ratio and should easily be able to loiter for traffic.

-End-